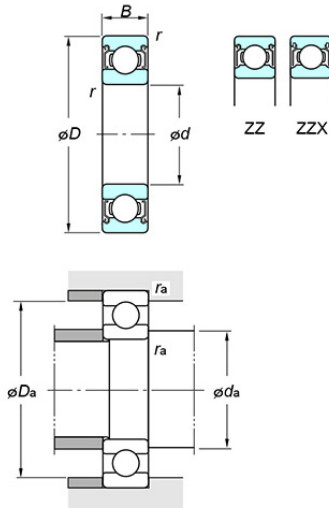


Deep groove ball bearings - Single-row - Shielded/sealed type - Shielded ZZ



Bearing No. 6212 ZZ

Specifications

(Boundary dimensions ...etc)

d(mm)	60
D(mm)	110
B(mm)	22
r(min.)(mm)	1.5
Basic load ratings : Cr(kN)	65.6
Basic load ratings : C0r(kN)	36.2
Fatigue load limit : Cu(kN)	2.40
factor : f0(l)	14.4
Limiting speeds(Grease lub.)(min-1)	5700
Limiting speeds(Oil lub.)(min-1)	

Mounting dimensions

da(min.)(mm)	68
da(max.)(mm)	72.5
Da(max.)(mm)	102
ra(max.)(mm)	1.5

Refer.

(Refer.)Mass(kg)	0.783
------------------	-------